



**COMPLETE
SOLUTION FOR
INSPECTION**



Part of Prime Holding Group, with over 35 years of experience, acting globally and presence on 5 continents: this is VMI Security. One of the world leaders in the development of innovative technological solutions and manufacture of equipment for X-ray inspection and scanners.

Our non-invasive inspection solutions allow you to see through objects, people, vehicles, and cargo; with a list of equipment, products, and services capable of fully serving the most varied segments, in the private and public sector. A huge variety of businesses and public services, from military installations, customs and border posts, schools, shopping malls, airports, museums, courts of law, prisons, logistics companies, warehouses, football stadiums and large sports arenas, concert halls, IML's, scientific police and hospitals.

In addition to offering the best products on the market, with state-of-the-art technology, versatility and high integration capacity with pre-adapted systems, VMI also offers operation and maintenance services. All to make security systems more efficient and agile and make life easier for our partners and customers.



VMI continually invest in acquiring certifications.



VMI SECURITY IS PART OF THE PRIME HOLDING



SPECTRUM BODYSCAN

Developed by experts in monitoring and security, VMI's Spectrum Bodyscan features state-of-the-art technology, which enables the detection of hidden objects inside the body, in a 7-second inspection, with extremely low radiation emission and the possibility of integration with other equipment.

An exclusive system that allows its integration with multiple Spectrum Bodyscan, allowing the automatic synchronization of information between the equipment, such as registration of the inspected and the operators, images of the inspected, dose of the inspected, list of suspicious individuals, in addition to other data relevant to the operation. The Spectrum Bodyscan was developed with a focus on high durability, ease of maintenance and high availability, for this reason the image capture system has no moving parts and can work in places with high inspection regime, for long periods without interruption and with low maintenance cost.

Thanks to the modular Spectrum platform, the Single View model can be upgraded to Dual View in a simple and fast way, which can be carried out with the equipment in the field, allowing to meet future security demands without the need for high investments.



INTEGRATED
DOSIMETER

VIDEO
CAMERAS

DETECTORS
UNDER
THE MAT

INTEGRATION
SYSTEM

X-RAY GENERATOR 170KV WITH ADDITIONAL FILTER

TUNNEL SIZE 2096MM(H) x 719MM(W)

LOAD CAPACITY 200KG

CERTIFICATION ONVIF

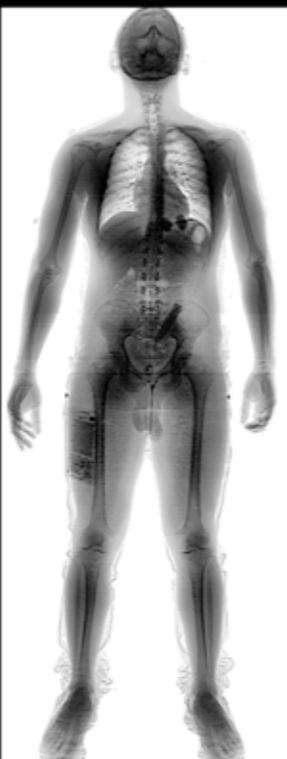
ANSI N43.17:2009 COMPLIANT

SPECTRUM ATIVA COMPATIBLE

THE VMI SYSTEMS FOLLOW THE MOST STRINGENT RULES OF QUALITY AND SECURITY. DEVELOPED ACCORDING TO THE MOST RESPECTED INTERNATIONAL CERTIFICATIONS.

The Spectrum Bodyscan have ultra-low dose technology which permit to acquire high image quality with minimal exposure. See below the dose reference:

MINIMAL EXPOSURE	
Single view:	<0.25uSV per inspection
Dual view:	<4.50uSV per inspection
International flight:	~ 5uSV per hour of flight

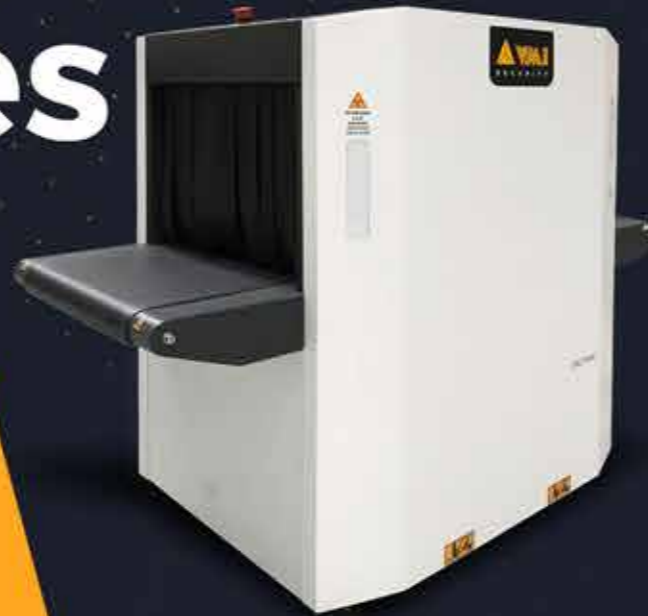


Modular design allows you to divide the equipment into 3 parts to pass them through conventional sized doors, for fast and low cost installation.

Version with shielded cabin, camera system, sensors on the door and intercommunicator.

Mail

Small packages



SPECTRUM 5536

Compact and agile, the Spectrum 5536 has unrivaled standard imaging and optimized tunnel size, making it suitable for sensitive security areas such as courts and prisons. The 160kV x-ray generator allows the Spectrum 5536 to present the best image quality obtained on the market.

X-RAY GENERATOR	160KV / 180KV
TUNNEL SIZE	574MM(W) × 372MM(H)
LOAD CAPACITY	80KG / 160KG
CERTIFICATIONS	ONVIF / QPS

ARTIFICIAL INTELLIGENCE AVAILABLE

METAL DETECTOR INTEGRATION

SPECTRUM ATIVA COMPATIBLE



SPECTRUM 5333

Ultra-compact design, Spectrum 5333 is one of the most compact equipment on the market, was developed focus on maximum freight efficiency and fast deployment, ideal for places that require high security level and small area such as rental market, events, schools, public buildings, universities, lost prevention and so on.

X-RAY GENERATOR	110KV (CONFIGURABLE)
TUNNEL SIZE	530MM(W) × 331MM(H)
LOAD CAPACITY	60KG
CERTIFICATIONS	ONVIF

ARTIFICIAL INTELLIGENCE AVAILABLE

METAL DETECTOR INTEGRATION

SPECTRUM ATIVA COMPATIBLE

*The Spectrum 5333 can be installed on the table or base, sold separately.

Checkpoint

Package, Bags and Objects Inspection



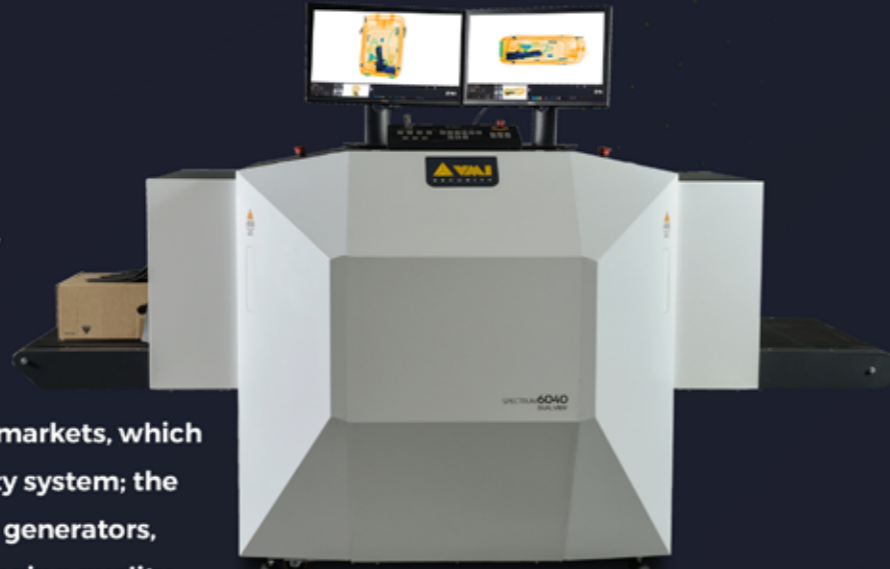
SPECTRUM 6040

With the most powerful generator in its class, the Spectrum 6040 is available in 4 versions, Single View, Dual View, Mobile and P3D. All with high image quality, automatic discrimination of organic, inorganic, and mixed materials by coloration and capacity for up to 200kg.

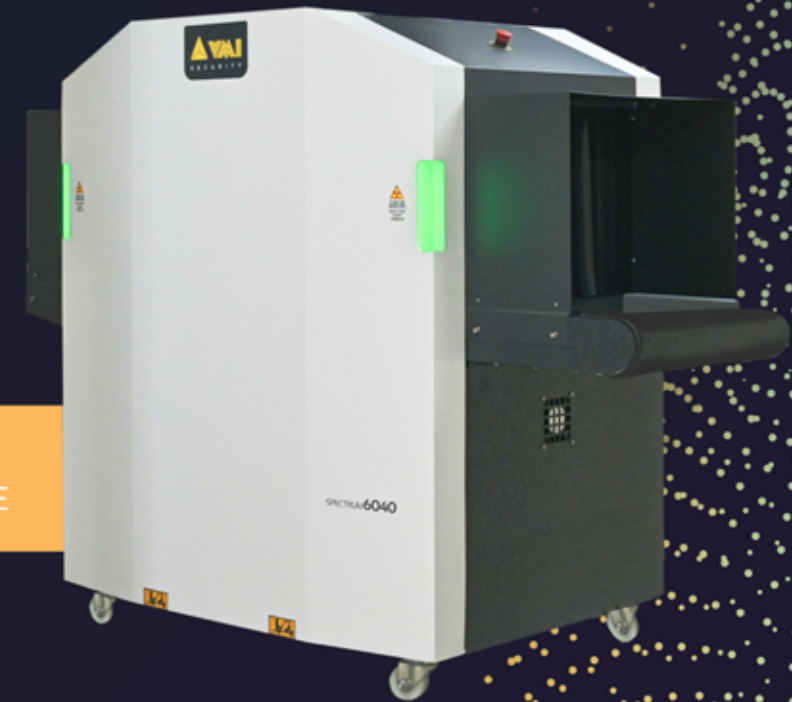
SPECTRUM 6040 P3D

Able to produce perspectives that capture the depth and detail of inspected volumes, our 3D perspective generation technology, applied to the Spectrum 6040 P3D, is not only innovative, but highly efficient. Being able to eliminate blind spots, increasing visibility and, consequently, identifying threats.

SPECTRUM 6040 DV



Designed to meet the needs of demanding markets, which depend on a high quality and robust security system; the 6040 DV operates with high-powered X-ray generators, achieving high levels of penetration and imaging quality.



SPECTRUM 6040 M

Developed to meet a growing demand for security systems that needs high mobility, the Spectrum 6040 M features an innovative design with a built-in monitor and keyboard, large castors and handles on the sides. Everything to make transport and installation easy, fast and convenient.



X-RAY GENERATOR

160KV / 180KV

TUNNEL SIZE

	(SINGLE VIEW)	(MOBILE)	(DUAL VIEW)	(P3D)
WIDTH	620MM	619MM	621MM	621MM
HEIGHT	424MM	424MM	420MM	420MM

LOAD CAPACITY

80KG / OPTIONAL 160KG OR 200KG

CERTIFICATIONS

	(SINGLE VIEW)	(MOBILE)	(DUAL VIEW)	(P3D)
	STAC	QPS	STAC	QPS
	QPS	ONVIF	QPS	ONVIF
	ONVIF		ONVIF	

ARTIFICIAL INTELLIGENCE AVAILABLE.

METAL DETECTOR INTEGRATION.

SPECTRUM ATIVA COMPATIBLE

Checkpoint



SPECTRUM 6575

With high inspection and threat detection capabilities, the Spectrum 6575 was designed to meet the needs of demanding markets, both in terms of security level and in terms of convenience for customers and visitors. It is ideal for airports, prisons, stadiums, courts, and public buildings. The SPECTRUM 6575 is available with Single View and Dual View version. Thanks to the advanced SPECTRUM platform, the single view version can be upgraded to dual view with minimal cost and effort in the field.

X-RAY GENERATOR 160KV / 180KV

TUNNEL SIZE 670MM(W) x 776MM(H)

LOAD CAPACITY 200KG

CERTIFICATIONS QPS / ONVIF



→ **Modular design**
The Spectrum 6575 can pass through standard doors, which allows fast installation of large tunnel size equipment with no hassle.

→ **Built-in monitor and keyboard**
Brings greater safety and robustness to the equipment.

- ARTIFICIAL INTELLIGENCE AVAILABLE
- METAL DETECTOR INTEGRATION
- SPECTRUM ATIVA COMPATIBLE
- SINGLE TO DUAL VIEW UPGRADABLE

SPECTRUM 7560

Rugged, the Spectrum 7560 was specifically designed to meet the needs of high security and control systems, required in high-flow situations. It has one of the most modern operating systems in the world, with a real-time self-diagnosis system.



X-RAY GENERATOR 160KV / 180KV

TUNNEL SIZE 751MM(W) x 610MM(H)

LOAD CAPACITY 160KG OR 200KG

CERTIFICATIONS QPS / ONVIF

- ARTIFICIAL INTELLIGENCE AVAILABLE
- METAL DETECTOR INTEGRATION
- SPECTRUM ATIVA COMPATIBLE

SPECTRUM 6550

Ideal for non-invasive inspection of bags, hand luggage and objects, the Spectrum 6550 guarantees the constant flow of control and security systems without sacrificing precision in the detection of threats and illegal activities.



X-RAY GENERATOR 160KV / 180KV

TUNNEL SIZE 650MM(W) x 520MM(H)

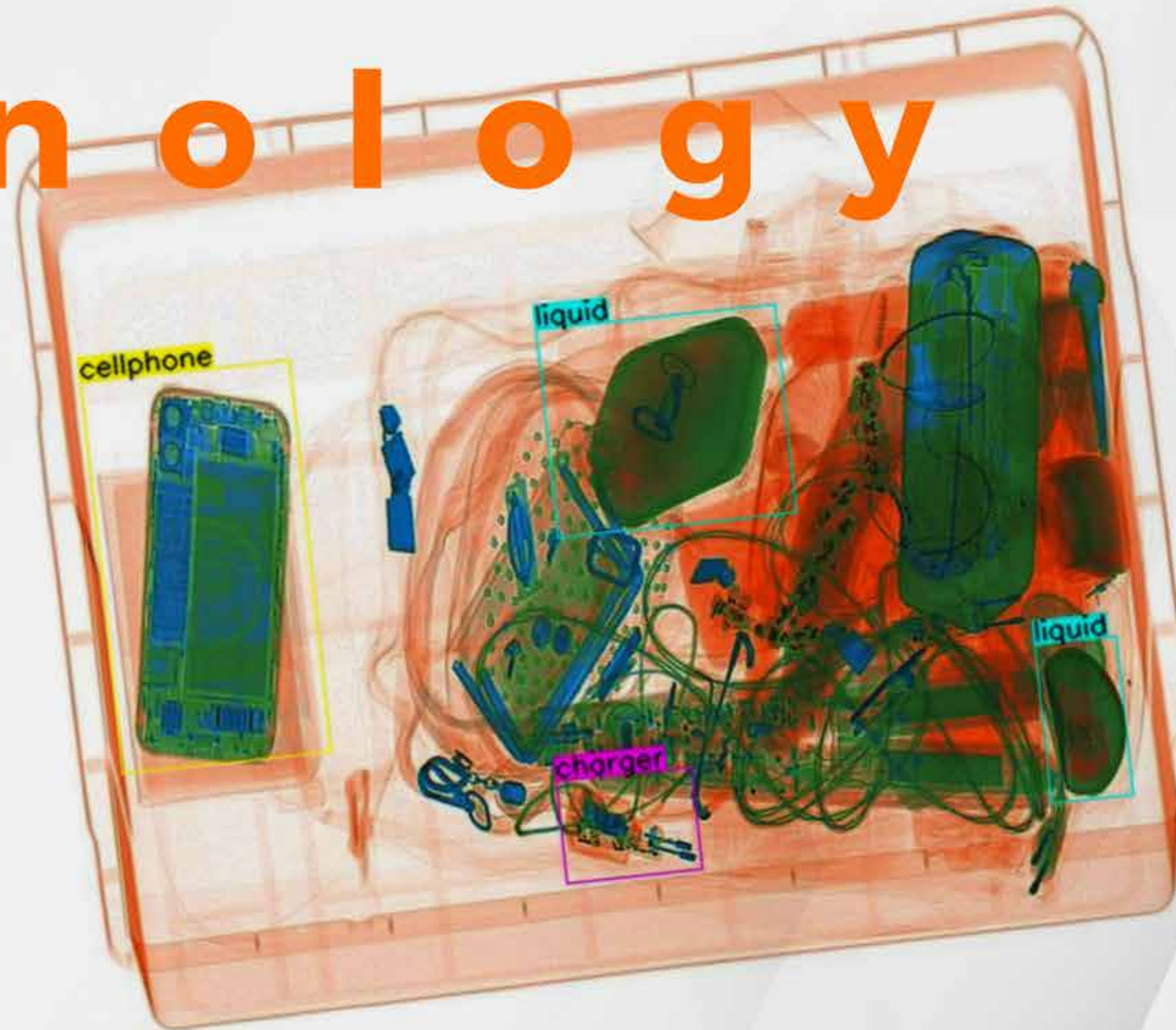
LOAD CAPACITY 160KG OR 200KG

CERTIFICATIONS QPS / ONVIF

- ARTIFICIAL INTELLIGENCE AVAILABLE
- METAL DETECTOR INTEGRATION
- SPECTRUM ATIVA COMPATIBLE
- SINGLE TO DUAL VIEW UPGRADABLE

High Technology

- ▶ 3D perspective technology
- ▶ AI (Artificial Intelligence) for threat identification
- ▶ ONVIF approved equipment
- ▶ QPS certified according to the international safety, EMC and EMI standards
- ▶ Video cameras at the entrance and exit of the inspection tunnel
- ▶ Modern design with LED indicators and long-lasting operating keypad
- ▶ Suspicious image reanalysis and remote monitoring and operation software
- ▶ Integration between Spectrum line equipment and Garrett WTMD
- ▶ Video monitoring system integrated with Spectrum equipment
- ▶ Integration of data and images with Spectrum Bodyscan body inspection systems



Pallets



SPECTRUM 150180

With state-of-the-art technology applied to the inspection of medium and large volumes, the Spectrum 150180 is a robust machine, without losing its agility. With a capacity to support up to 3,000 kg and constant flow, they are ideal for airports, customs, railway stations, mail storage, among other large cargo transit environments.

X-RAY GENERATOR	200 KV
TUNNEL SIZE	1550MM (W) x 1802MM (H)
LOAD CAPACITY	3000KG
CERTIFICATIONS	ONVIF

ARTIFICIAL INTELLIGENCE AVAILABLE

METAL DETECTOR INTEGRATION

SPECTRUM ATIVA COMPATIBLE



SPECTRUM 180180

Available in Single View and Dual View versions, the Spectrum 180180 has a high level of performance, sharpness, and unrivaled image quality. With a capacity of up to 3,000 kg, Thanks to the advanced Spectrum platform, the single view version can be upgraded to dual view with minimal cost and effort in the field.

X-RAY GENERATOR	200 KV / 320 KV
TUNNEL SIZE	1820MM(L) x 1802MM(A)
LOAD CAPACITY	3000KG
CERTIFICATIONS	STAC / ONVIF / SGS APPROVED

ARTIFICIAL INTELLIGENCE AVAILABLE

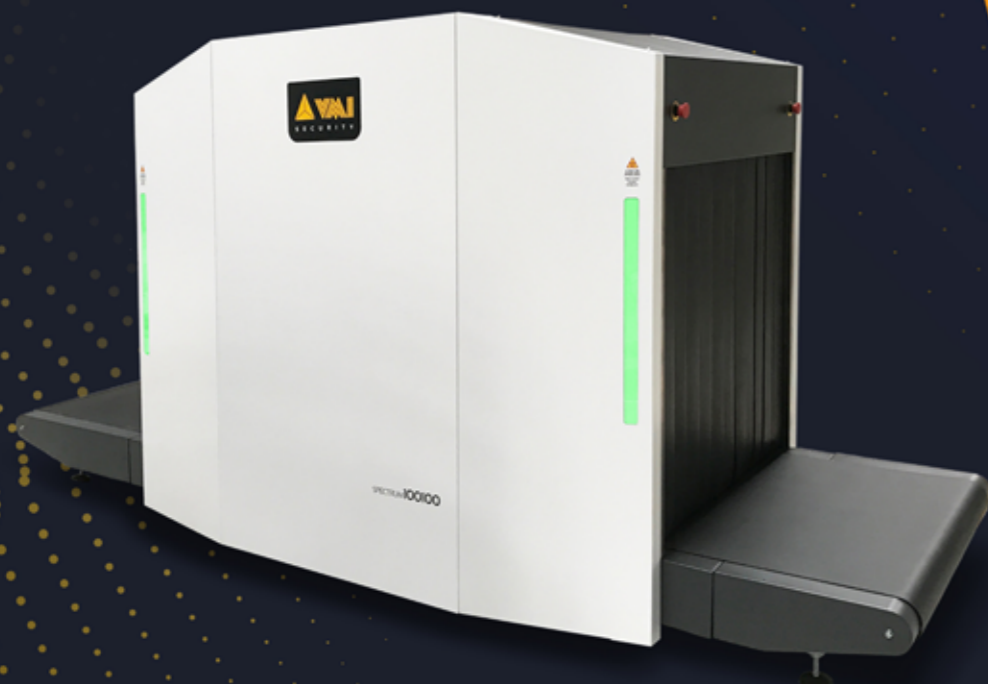
METAL DETECTOR INTEGRATION

SPECTRUM ATIVA COMPATIBLE

SINGLE TO DUAL VIEW UPGRADABLE

Light double curtain layer technology allow to inspect low weight cargo with no risk to the cargo being dropped by the curtain. Bringing greater productivity and safety to the operation.

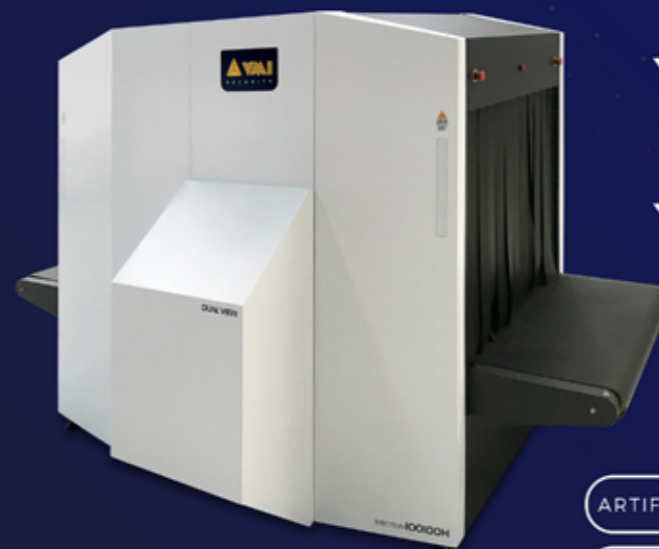
Large Baggage



SPECTRUM 100100

Modern design and high image quality are just some of the features that make the Spectrum 100100 one of the leading equipment on the market. Used in international airports, customs facilities, transport companies and logistics and distribution companies, this scanner has all the requirements to meet business needs that require high security with full tracking of loads of different sizes.

With four versions available, Single view or Dual View and high or lower conveyor belt, the equipment of this line, guarantee accurate and automatic identification of threats. Thanks to the advanced Spectrum platform, the single view version can be upgraded to dual view with minimal cost and effort in the field.



SPECTRUM 100100 H

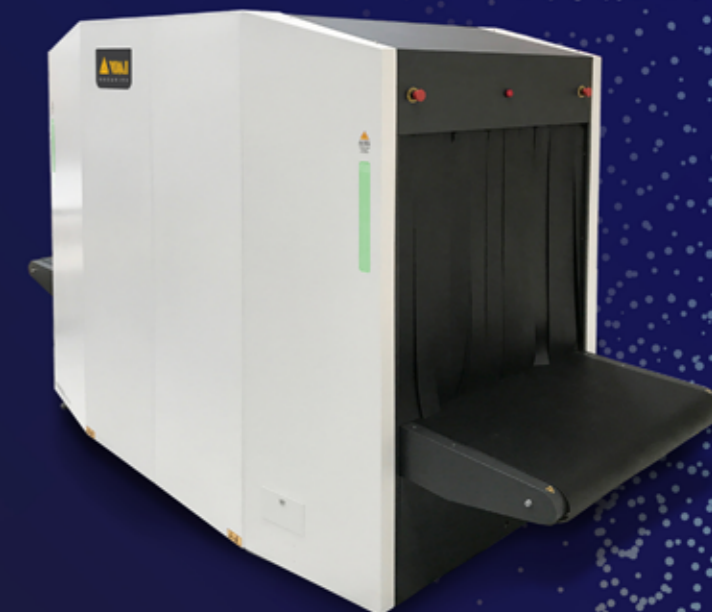
- ARTIFICIAL INTELLIGENCE AVAILABLE
- METAL DETECTOR INTEGRATION
- SPECTRUM ATIVA COMPATIBLE
- SINGLE TO DUAL VIEW UPGRADABLE

X-RAY GENERATOR	160KV / 180KV
TUNNEL SIZE	1013MM(W) x 1003MM(H)
LOAD CAPACITY	200KG
CERTIFICATIONS	(H) STAC QPS ONVIF
	(HDV) QPS ONVIF



SPECTRUM 100100 HDV

- ARTIFICIAL INTELLIGENCE AVAILABLE
- METAL DETECTOR INTEGRATION
- SPECTRUM ATIVA COMPATIBLE
- SINGLE TO DUAL VIEW UPGRADABLE



SPECTRUM 100100 DV

X-RAY GENERATOR	160KV / 180KV
TUNNEL SIZE	1014MM(W) x 1010MM(H)
LOAD CAPACITY	200KG
CERTIFICATIONS	(SV) STAC QPS ONVIF
	(DV) STAC QPS ONVIF

Scanner mobile



SPECTRUM 100100 VAN

Modern design, high mobility, suspicious image reanalysis software, potential to withstand intense flow, video monitoring system and the possibility of data and image integration with line inspection systems guarantee the Spectrum Van 100100 full tracking capability. Loads of different dimensions, being a determining ally in the success of mobile inspection operations of luggage and objects. It is the ideal equipment for inspection in police blitzes, large events, airports, stadiums, highways and checkpoints.

Mobility and agility for
Inspection
in any environment

X-RAY GENERATOR	160KV / 180KV
TUNNEL SIZE	1014MM(W) x 1010MM(H)
LOAD CAPACITY	200KG
CERTIFICATION	ONVIF

ARTIFICIAL INTELLIGENCE AVAILIABLE

SPECTRUM ATIVA COMPATIBLE

METAL DETECTOR INTEGRATION



Vehicles, Cargo and Container Inspection

SPECTRUM CARGO COMPACT

Robust design, with redundant air conditioning, oil cooled tube and Linux based platform, makes Spectrum Compact a robust and reliable solution for continuous vehicle inspection, even in harsh environments.

Multiple sensor and advanced safety algorithm, allows the Spectrum Compact to screen vehicle fully automated allowing operators to focus on image analysis and strategic security activities. State-of-art image quality and advanced image processing filters, Spectrum Compact allows easy identification of narcotics, contraband, and weapons, even in large and dense vehicles. Spectrum Compact could be integrated with Automatic License Plate Recognition System, Under vehicle Camera and other technologies to provide complete and efficient security solutions.

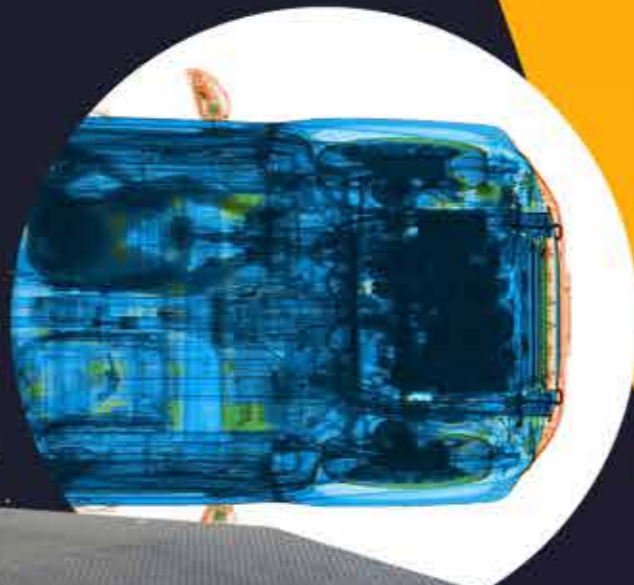
ONVIF CERTIFIED

SPECTRUM ATIVA COMPATIBLE

ANSI N43.17:2009 COMPLIANT



Online remote
monitoring and
diagnostic station



Multiple
VIEWER
workstations



Integration
with
OCR



4.5 and
6.0 MeV ⚡

SPECTRUM CARGO

Housing the most modern and reliable linear accelerator in the world, Spectrum Cargo enables high penetration in steel and fast data transfer. Available in Single and Dual Energy versions, the equipment allows the driver to remain in the vehicle and its innovative free flow automatic scanning process guarantees the constant passage of vehicles at inspection sites.



Forensic Analysis

SPECTRUM FLATSCAN



The FLATSCAN is fully compatible with any DICOM system.

X-RAY GENERATOR 40KV TO 125KV

TUNNEL SIZE SV: 800MM (W) x 776MM (H)
DV: 800MM (W) x 780MM (H)

LOAD CAPACITY 250KG

The Flatscan DF-80 was developed focused on autopsy application, robust mechanical design, easy to clean and remote positioning, makes Flatscan an indispensable equipment for forensic lab. The Flatscan DF-80 DV, have patented rotating tube technology which permit easily acquire AP and Lateral image with single click in the software. This is one of many other technologies that FLATSCAN allows the entire process to be carried out by a single operator, without physical effort and direct contact with the corpse, bringing greater agility and safety to the autopsy process. This portable system is self-contained and advanced self-shielding technology permits operation without the need for a special or exclusive room to operate in.

IMAGE IN REAL TIME
Internal camera system to choose the best image without interrupting the process.

QUALITY AND SPEED
Respond with accurate reports using an agile and non-invasive inspection.

SAFE OPERATION
Shielded inspection tunnel and operating indicator lights.

DIGITAL FILE
Document available in JPG, TIFF, DICOM or PDF format.

INTERACTIVE TOOLS
Enables interactions to obtain evidence of death.

INTUITIVE INTERFACE
Easy to operate without the need for an X-ray technician.


EASY CLEANING STAINLESS STEEL TUNNEL

SHIELDED TUNNEL

OPERATION CENTRAL

INTEGRATED SCALE



 OFFICE

**1101 Brickell Avenue,
South Tower, 8th Floor
Miami, FL - USA
Phone: +1 305 779 5692**

 FACTORY

**R. Um, 55 - Distrito Industrial
Genesco Aparecido de Oliveira
Lagoa Santa, MG - Brazil
Phone +55 31 3622 0470**

www.vmisecurity.com